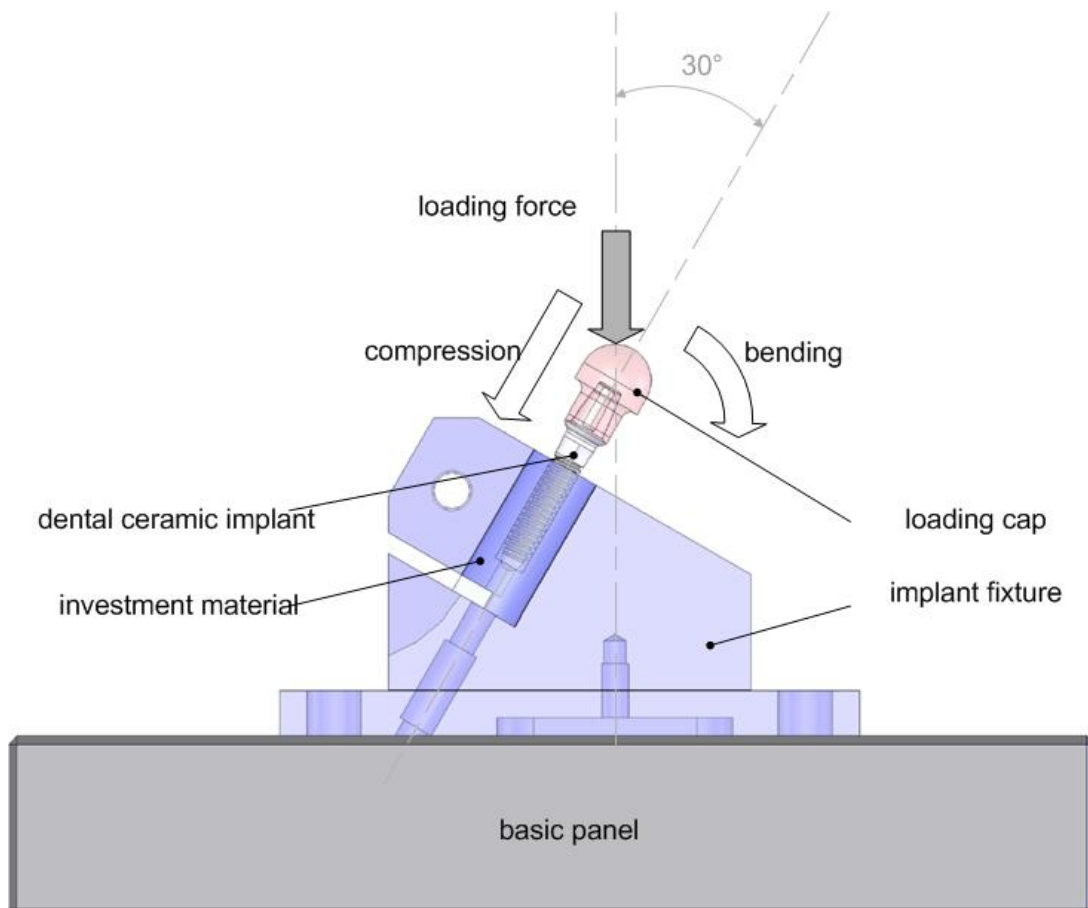


Fatigue testing of zirconium oxide high-performance ceramic endosseous dental implants

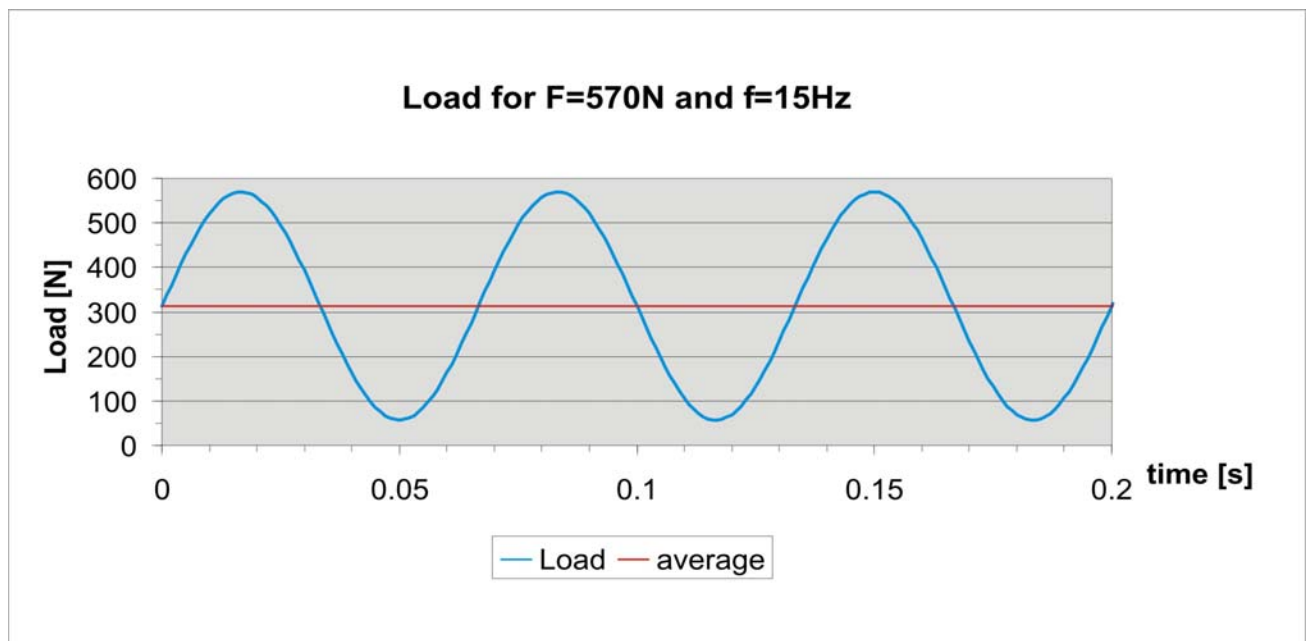
- Fatigue testing under EN ISO 14801
- Testing of dental implants with differing designs and dimensions
- Testing under “worst-case scenario” conditions



- Load geometry: implant axis 30 ° inclined vertically



■ **Load type of implant:**



- Oscillatory compressive load, controlled force course
- Force course oscillates sinusoidal between the nominal peak load and 10% of this value.
- Testing carried out in air at 15 load cycles per second.
- Test duration: 5 million load cycles

■ **Measurements:**

- Measuring peak and minimum load force
- Monitoring bending through path measurement

